



HiDew S.r.l.
 Viale Spagna, 31/33
 35020 Tribano (PD) ITALY
 tel: +39 049 9588511
 fax: +39 049 9588522
 web: www.hidew.it

| | |
|-------|-----------|
| Serie | DVS - DOS |
| Model | 210 / 230 |

| | | | |
|--------------|------------|------------|-----|
| Drawing code | HD62E00107 | Controller | EVO |
|--------------|------------|------------|-----|

| | | |
|--------------|-------|---|
| Power supply | 400 V | - |
| Auxiliary | - | - |

| | | | | | |
|------------|------------|-------------|------------|------|---|
| Created by | N.B. | Revision by | N.B. | Last | A |
| Date | 10.09.2015 | Date | 22.04.2016 | | |

| | |
|-----------------------|-------|
| Max power [kW] | pag 2 |
| FLA - max curr. [A] | pag 2 |
| LRA - start curr. [A] | pag 2 |

| | |
|-------------------|-------|
| Recommended prot. | pag 2 |
|-------------------|-------|

| | | | | | | | | | | |
|----------|------------|------|-------|------------|--|------------|------------------------|------------|-------|---|
| REVISION | | | DATE | 10.09.2015 | | COVER PAGE | TOT SHEET | 9 | | |
| LAST | DATE | BY | DRAW | N.B. | | | CONTINUE | 2 | | |
| A | 22.04.2016 | N.B. | CHECK | N.B. | | | DVS - DOS 210 / 230 | HD62E00107 | SHEET | 1 |
| | | | APPR | D.G. | | | | | | |

| | | | | | | | | |
|---|---|---|---|---|---|---|---|---|
| | 1 | 2 | 3 | 4 | 5 | 6 | 7 | 8 |
| A | | | | | | | | |
| B | | | | | | | | |
| C | | | | | | | | |
| D | | | | | | | | |
| E | | | | | | | | |
| F | | | | | | | | |

| | | |
|--------------|------------|------------|
| MODEL | 210 | 230 |
|--------------|------------|------------|

**WITHOUT
ELECTRIC
BATTERY**

| | | |
|---------------------------|------|------|
| MAX POWER - [W] | 4700 | 4700 |
| FLA - MAX CURRENT - [A] | 9,3 | 9,4 |
| LRA - START CURRENT - [A] | 49,8 | 49,8 |
| RECOMMENDED PROTECTION | 16 A | |

**WITH
ELECTRIC
BATTERY**

| | | |
|---------------------------|------|------|
| MAX POWER - [W] | 8700 | 8700 |
| FLA - MAX CURRENT - [A] | 18 | 18,1 |
| LRA - START CURRENT - [A] | 58,5 | 58,5 |
| RECOMMENDED PROTECTION | 32 A | |

| | | | |
|----------|------------|------|------------|
| REVISION | | DATE | 10.09.2015 |
| LAST | DATE | BY | DRAW |
| A | 22.04.2016 | N.B. | N.B. |
| | | | CHECK |
| | | | APPR |
| | | | D.G. |

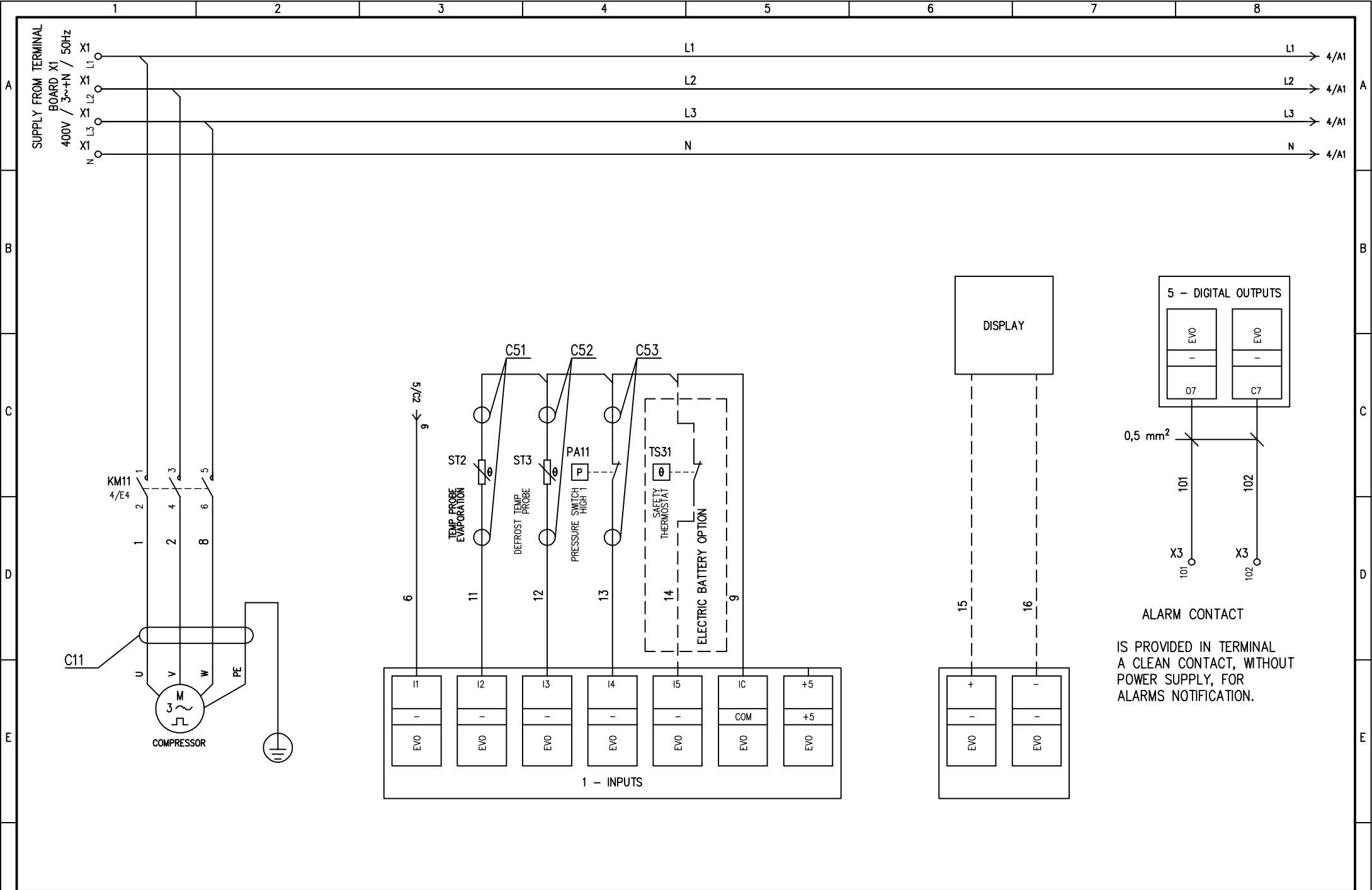


ELECTRICAL DATA

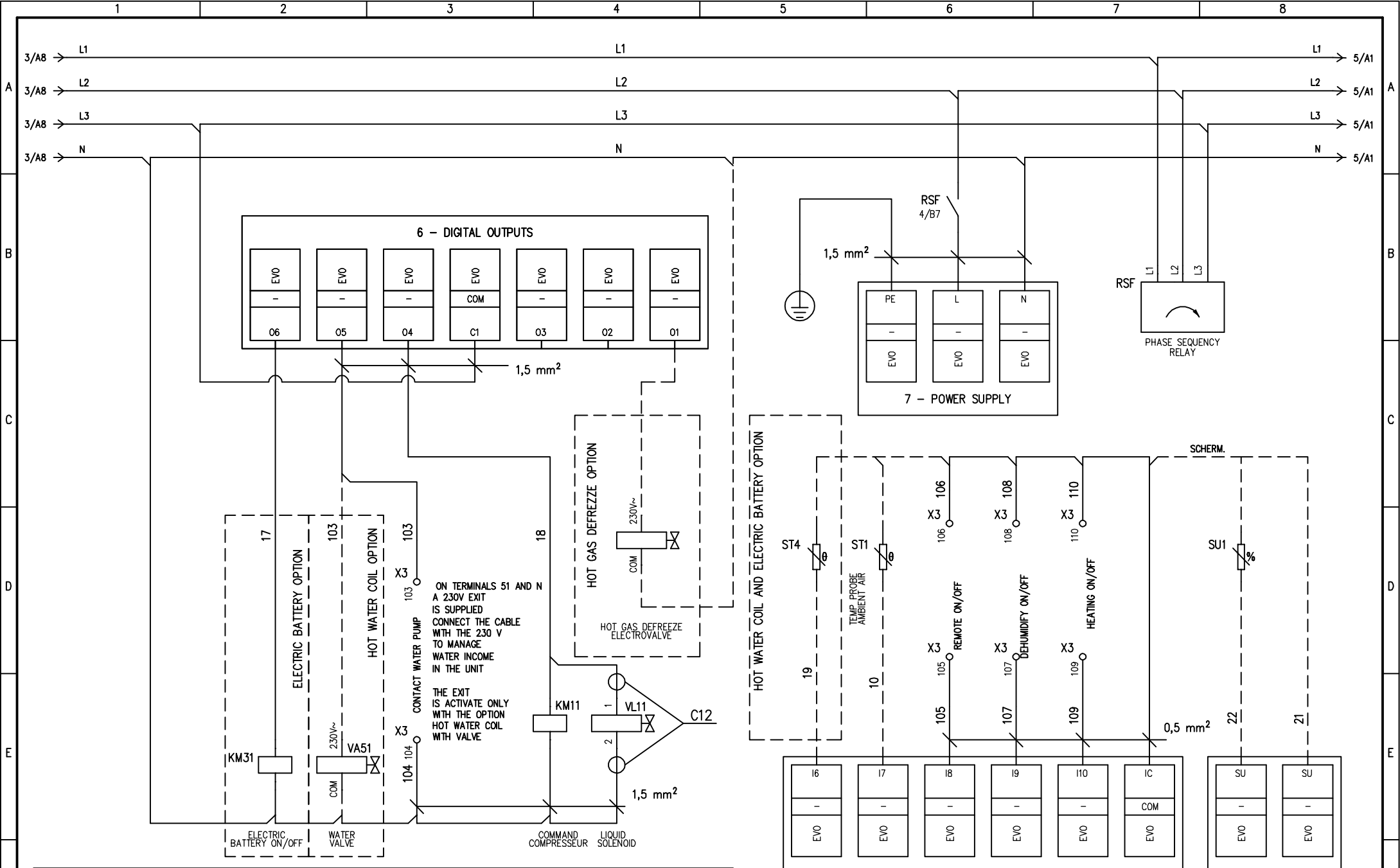
DVS - DOS
210 / 230

HD62E00107

| | |
|-----------|---|
| TOT SHEET | 9 |
| CONTINUE | 3 |
| SHEET | 2 |



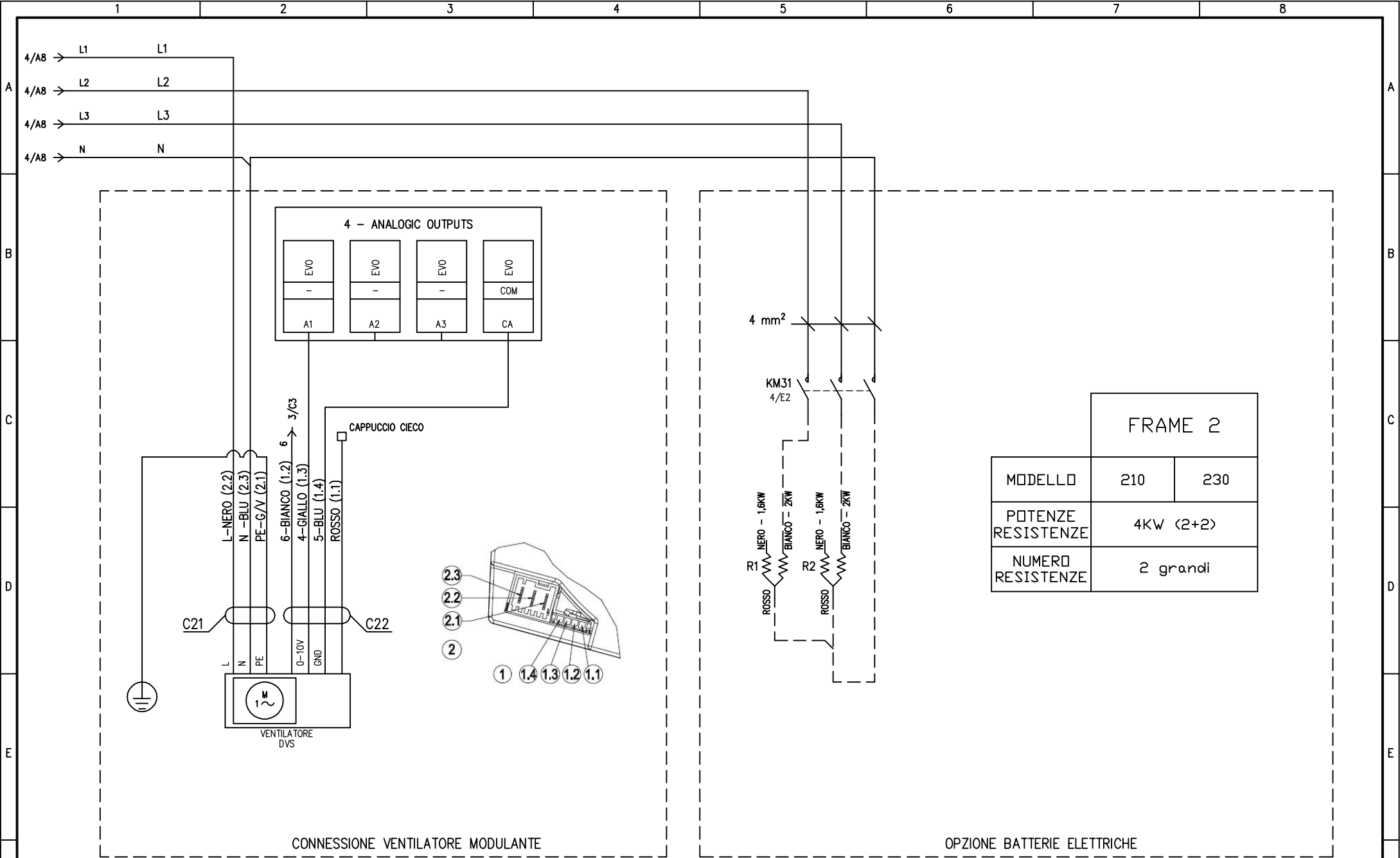
| | | | | | | | | | |
|----------|------------|------|------------|--------------------|-----------|--|------------|----------|---|
| REVISION | | DATE | 10.09.2015 | WIRING DIAGRAM | | | TOT SHEET | 9 | |
| LAST | DATE | BY | DRAW | N.B. | DVS - DOS | | | CONTINUE | 4 |
| A | 22.04.2016 | N.B. | CHECK | N.B. | 210 / 230 | | | SHEET | 3 |
| | | APPR | D.G. | FRANCE DEPUIS 1934 | | | HD62E00107 | | |



N.B. PER IL QUADRISTA: PREDISPORRE COLLEGAMENTO PER KM31 CON PUNTALINI

| | | | | | | | | |
|----------|------------|------|------------|----------------|--|--|-----------|---|
| REVISION | | DATE | 10.09.2015 | WIRING DIAGRAM | | | TOT SHEET | 9 |
| LAST | DATE | BY | DRAW | DVS - DOS | | | CONTINUE | 5 |
| A | 22.04.2016 | N.B. | CHECK | 210 / 230 | | | SHEET | 4 |
| | | | APPR | HD62E00107 | | | | |



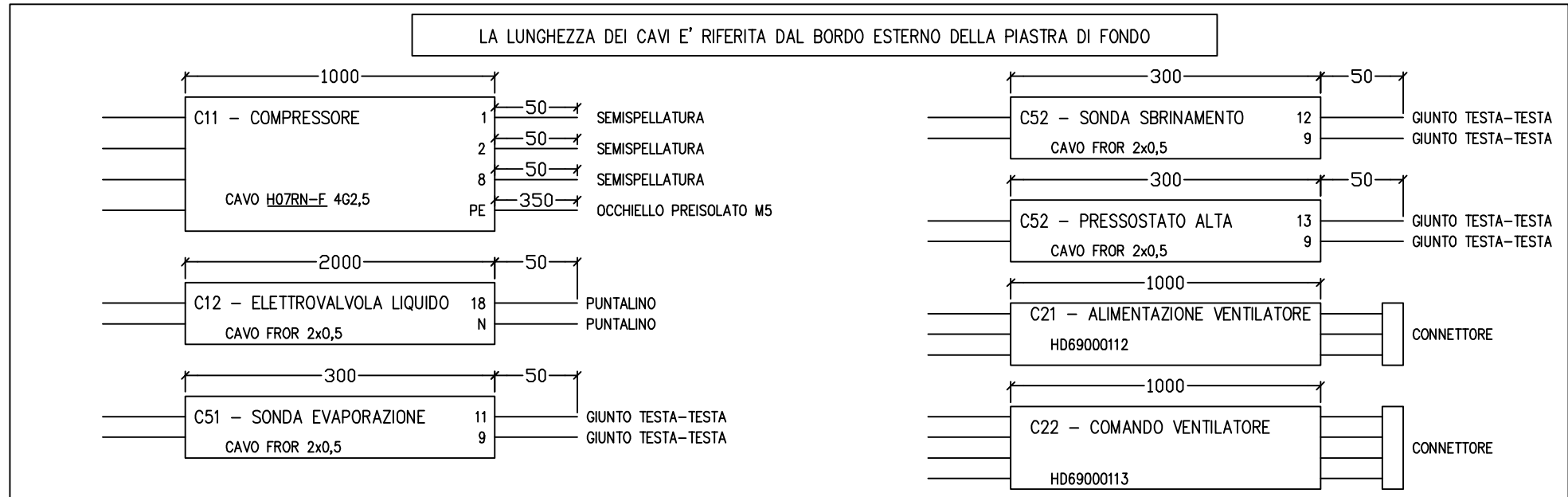


| | | |
|--------------------|-----------|-----|
| FRAME 2 | | |
| MODELLO | 210 | 230 |
| POTENZE RESISTENZE | 4KW (2+2) | |
| NUMERO RESISTENZE | 2 grandi | |

N.B. PER IL QUADRISTA: PREDISPORRE COLLEGAMENTO PER KM31 CON PUNTALINI

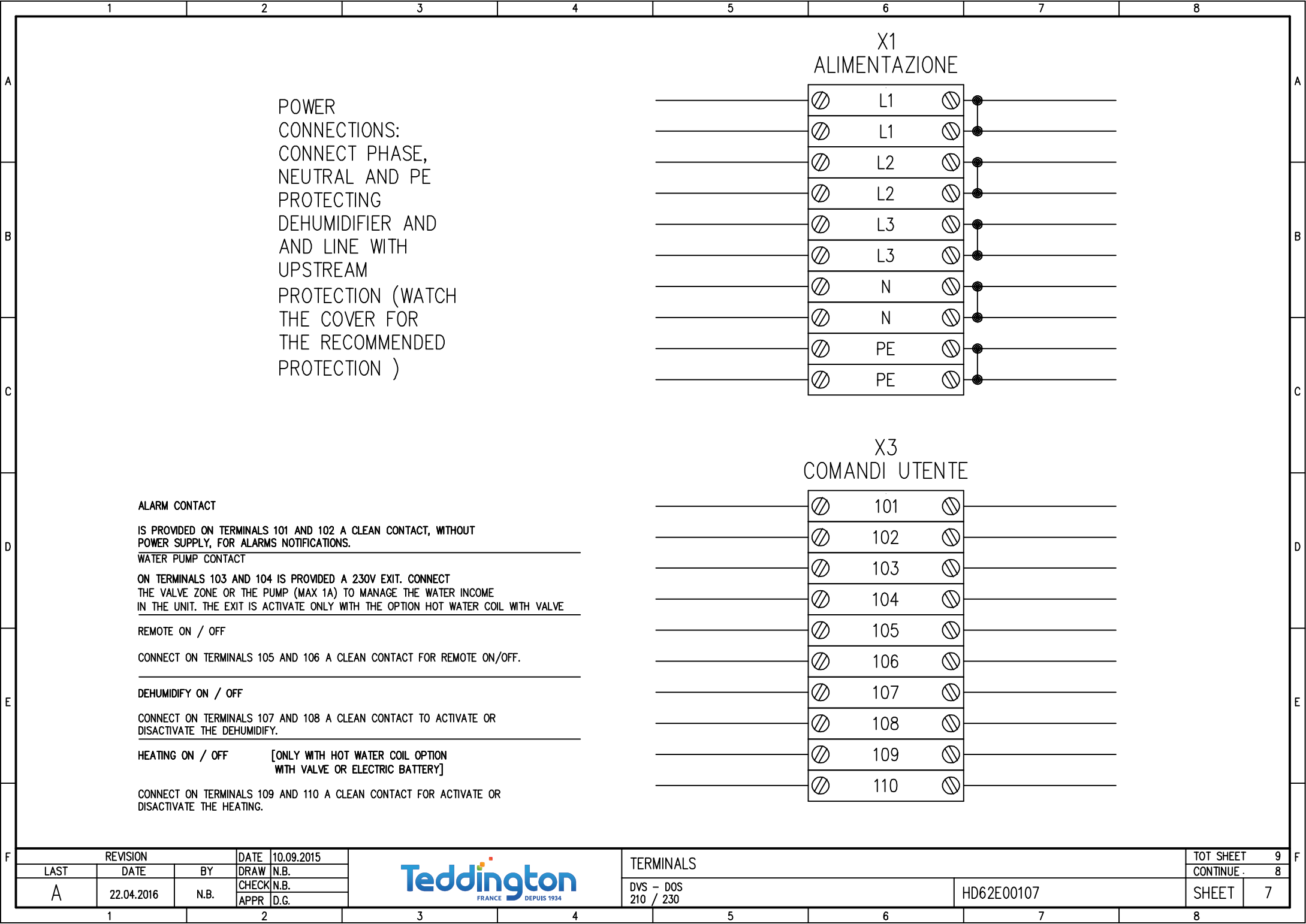
| 1 | 2 | 3 | 4 | 5 | 6 | 7 | 8 | |
|------------|-------|------------------------|-----------------|-------------------------|---|-----------|------|-----------|
| DISTINTA | | | | | | | | |
| UBICAZIONE | SIGLA | FUNZIONE | MARCA | CODICE | DESCRIZIONE | QUANTITA' | M.U. | POSIZIONE |
| | KM11 | CONTATTORE COMPRESSORE | SIEMENS | 3RT10 25-1AP00 | CT 3P 7,5kW bob 230Vac | 1 | | |
| | X1 | MORSETTI | PHOENIX CONTACT | 3031393 | MORSETTI ST 4 - TWIN | 8 | | |
| | X1 | MORSETTI | PHOENIX CONTACT | 3031416 | MORSETTI ST 4 - TWIN - PE | 2 | | |
| | X3 | MORSETTI | PHOENIX CONTACT | 3031186 | ST 1,5 - QUATTRO | 10 | | |
| | RSF | RELÈ SEQUENZA FASI | GAVAZZI | DPA51CM44 | IL QUADRISTA DEVE PREDISPORRE SOLTANTO I FILI | 1 | | |
| | | SCHEDA DI POTENZA EVO | | HD11000010 | FORNITA IN CONTO LAVORO | 1 | | |
| | | C21 e C22 | | HD69000112 / HD69000113 | FORNITI IN CONTO LAVORO | 1 + 1 | | |
| | | PIASTRA DI FONDO | | HD17000904 REV./ | FORNITA IN CONTO LAVORO | 1 | | |

CAVI



| | | | | | | | | |
|----------|------------|------|------------|--|-----------|------------|-----------|---|
| REVISION | | DATE | 10.09.2015 | CABLES AND MATERIAL LIST (INTERNAL USE ONLY) | | | TOT SHEET | 9 |
| LAST | DATE | BY | DRAW | N.B. | | | CONTINUE | 7 |
| A | 22.04.2016 | N.B. | CHECK | N.B. | DVS - DOS | HD62E00107 | SHEET | 6 |
| | | | APPR | D.G. | 210 / 230 | | | |





POWER CONNECTIONS:
 CONNECT PHASE, NEUTRAL AND PE PROTECTING DEHUMIDIFIER AND AND LINE WITH UPSTREAM PROTECTION (WATCH THE COVER FOR THE RECOMMENDED PROTECTION)

ALARM CONTACT
 IS PROVIDED ON TERMINALS 101 AND 102 A CLEAN CONTACT, WITHOUT POWER SUPPLY, FOR ALARMS NOTIFICATIONS.

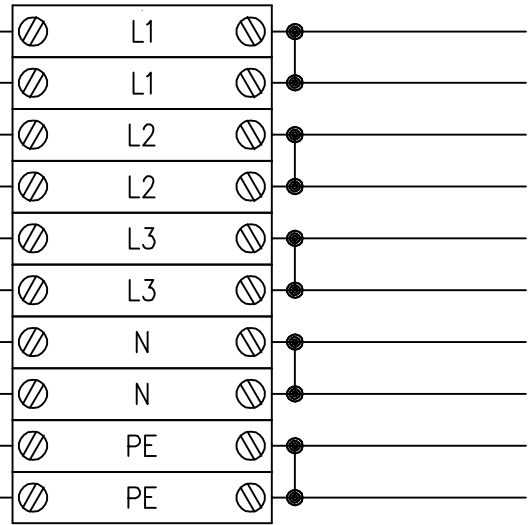
WATER PUMP CONTACT
 ON TERMINALS 103 AND 104 IS PROVIDED A 230V EXIT. CONNECT THE VALVE ZONE OR THE PUMP (MAX 1A) TO MANAGE THE WATER INCOME IN THE UNIT. THE EXIT IS ACTIVATE ONLY WITH THE OPTION HOT WATER COIL WITH VALVE

REMOTE ON / OFF
 CONNECT ON TERMINALS 105 AND 106 A CLEAN CONTACT FOR REMOTE ON/OFF.

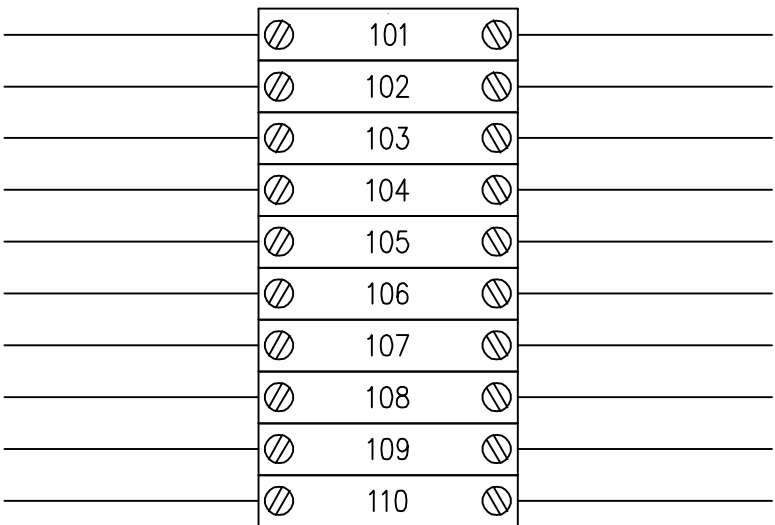
DEHUMIDIFY ON / OFF
 CONNECT ON TERMINALS 107 AND 108 A CLEAN CONTACT TO ACTIVATE OR DISACTIVATE THE DEHUMIDIFY.

HEATING ON / OFF [ONLY WITH HOT WATER COIL OPTION WITH VALVE OR ELECTRIC BATTERY]
 CONNECT ON TERMINALS 109 AND 110 A CLEAN CONTACT FOR ACTIVATE OR DISACTIVATE THE HEATING.

X1
ALIMENTAZIONE



X3
COMANDI UTENTE



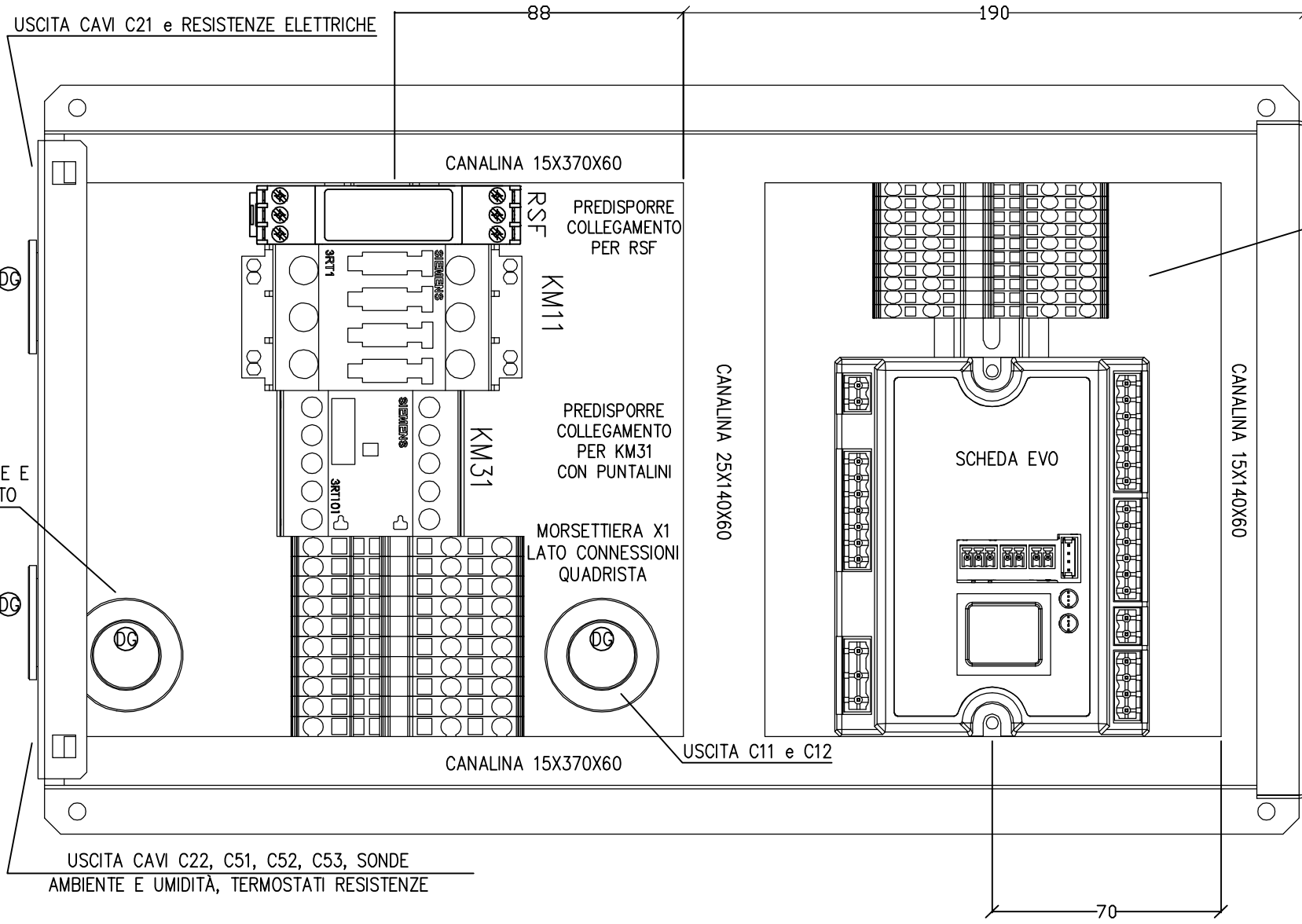
| | | | |
|----------|------------|------|------------|
| REVISION | | DATE | 10.09.2015 |
| LAST | DATE | BY | DRAW N.B. |
| A | 22.04.2016 | N.B. | CHECK N.B. |
| | | | APPR D.G. |



| | | | |
|------------|--|-----------|---|
| TERMINALS | | TOT SHEET | 9 |
| DVS - DOS | | CONTINUE | 8 |
| 210 / 230 | | SHEET | 7 |
| HD62E00107 | | | |

N.B. PER IL QUADRISTA: INSERIRE PASSACAVI DOVE PREVISTO (DG)

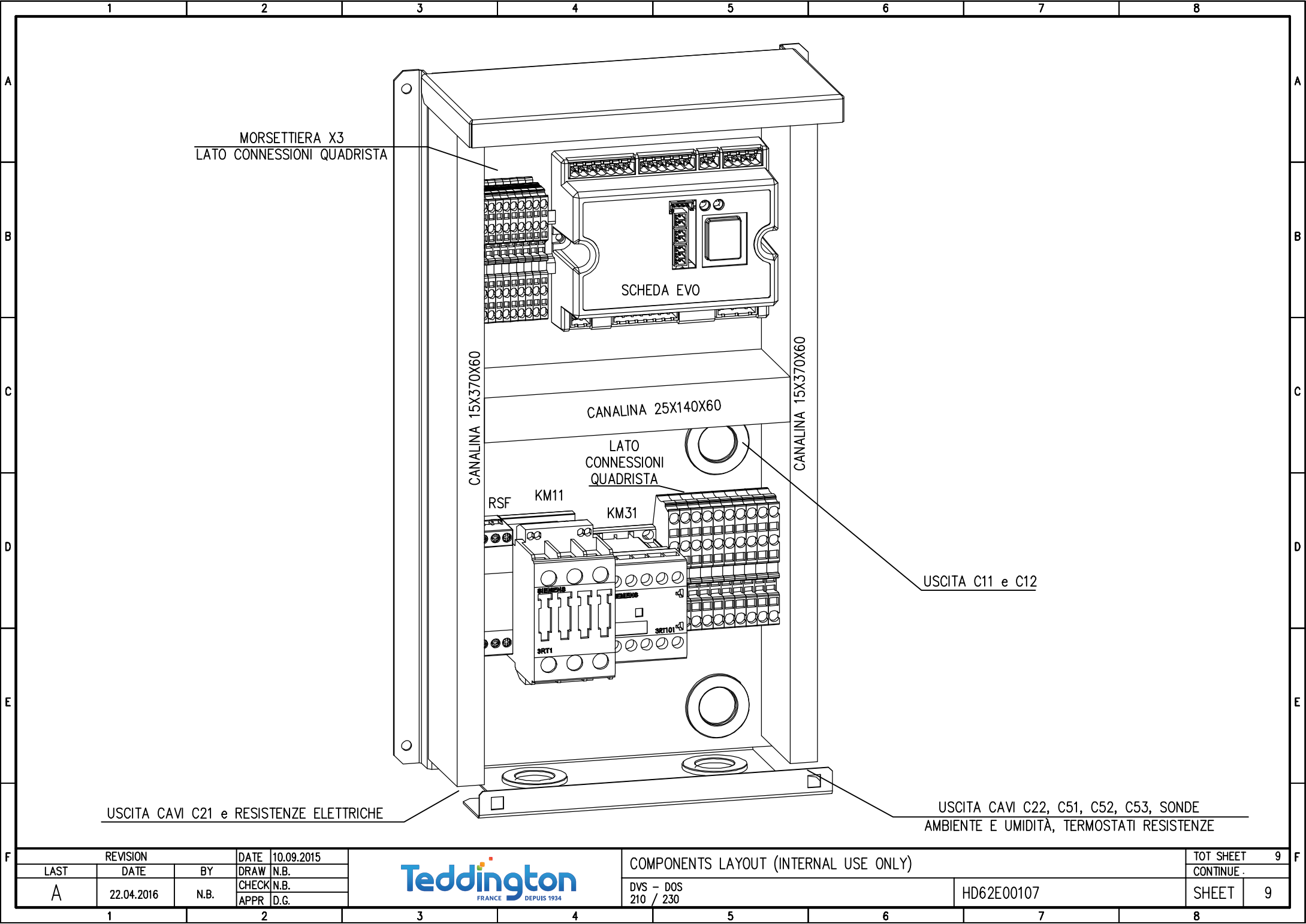
N.B. PER IL QUADRISTA: DAI MORSETTI X1 ENTRARE DIRETTAMENTE NELLA CANALINA DA 25



| | | | |
|----------|------------|------|------------|
| REVISION | | DATE | 10.09.2015 |
| LAST | DATE | BY | DRAW N.B. |
| A | 22.04.2016 | N.B. | CHECK N.B. |
| | | | APPR D.G. |



| | | | | |
|---------------------------------------|--|------------|-----------|---|
| COMPONENTS LAYOUT (INTERNAL USE ONLY) | | | TOT SHEET | 9 |
| | | | CONTINUE | 9 |
| DVS - DOS | | HD62E00107 | SHEET | 8 |
| 210 / 230 | | | | |



| | | | |
|----------|------------|------|------------|
| REVISION | | DATE | 10.09.2015 |
| LAST | DATE | BY | DRAW N.B. |
| A | 22.04.2016 | N.B. | CHECK N.B. |
| | | | APPR D.G. |



| | | | | |
|---------------------------------------|--|-------|------------|---|
| COMPONENTS LAYOUT (INTERNAL USE ONLY) | | | TOT SHEET | 9 |
| DVS - DOS 210 / 230 | | | CONTINUE . | |
| HD62E00107 | | SHEET | 9 | |